

**DLS BARN**  
SOLUTIONS INC.

# COW BRUSHES



[www.dlsbarnsolutions.ca](http://www.dlsbarnsolutions.ca)



# COW BRUSHES > STYLES



57526



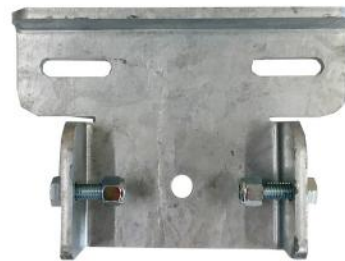
57527



57528



57564



57773

PART NUMBER	DESCRIPTION
57526	COW BRUSH - EASY SWING - LARGE
57527	COW BRUSH - EASY SWING - MEDIUM
57528	COW BRUSH - EASY SWING - SMALL
57564 <sup>1</sup>	COW BRUSH - EASY SWING - TOTEM
57566	COW BRUSH - EASY SWING - PACK OF 10 LARGE REPLACEMENT BRISTLES - FOR 57526, 57527 AND 57564
57567	COW BRUSH - EASY SWING - PACK OF 10 SMALL REPLACEMENT BRISTLES - FOR 57528
57773 <sup>2</sup>	COW BRUSH - EASY SWING - GALV. MOUNTING BRACKET - EACH - 2 REQ'D PER BRUSH - FASTENERS REQ'D
51728	U-BOLT FOR 4" ROUND POST (1/2")
51734	U-BOLT FOR 4" SQUARE POST (1/2")
51735	U-BOLT FOR 5" SQUARE POST (1/2")
51736	U-BOLT FOR 6" SQUARE POST (1/2")
54969	U-BOLT FOR 7" SQUARE POST (1/2")
57279	OCTOPOST CLAMP - 4" - BARE HALF CLAMP (GALV)

<sup>1</sup> Special order only

<sup>2</sup> Part#57773 requires an appropriate back half to complete the bracket (u-bolt or octopost clamp)



Easy Swing®

PAT. PEND.

## COW BRUSHES > FEATURES



### BENEFITS TO USING COW BRUSHES

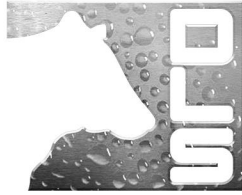
1. IMPROVES COW COMFORT
2. KEEPS COWS CLEAN
3. ENCOURAGES HAIR SHEDDING
4. A SOURCE OF ENTERTAINMENT
5. AVOIDS DESTRUCTIVE BEHAVIOR
6. PROMOTES PROPER COW TRAFFIC FLOW

### EASY SWING COW BRUSH FEATURES

1. SIMPLE SIMPLE SIMPLE!
2. NO MOTOR OR ELECTRICITY
3. FULL SWINGING MOTION
4. EXTREMELY DURABLE
5. BRISTLES COME AS REPLACEABLE INDIVIDUAL RINGS
6. 2 YEAR WARRANTY ON THE FRAME, 1 YEAR WARRANTY ON THE BRISTLES

## THINK BEYOND DAIRY





**DLS BARN**  
SOLUTIONS INC.

AUTHORIZED DEALER



DLS BARN SOLUTIONS is the North American partner for Jourdain stabling, and the Canadian partner for ACME ventilation, La Buvette drinkers and Easy Swing cow brushes. Through a strong dealer network, we are able to provide stabling solutions throughout North America, and ventilation, water and cow brush solutions throughout Canada. Associated with Dairy Lane Systems, DLS Biogas and DLS Structures, we have been serving dairy farmers for over 25 years, and through the four DLS companies, we are in a unique position to offer a complete solution to today's dairy farmer.



**JOURDAIN**



**Stay Connected With DLS!**

E-Newsletter Subscription @ [www.dairylane.ca/subscribe](http://www.dairylane.ca/subscribe)



6403 Egremont Drive | Komoka, ON. | N0L 1R0 | Canada  
TELEPHONE: 519-666-1404 | TOLL-FREE: 1-800-361-2303 | FAX: 519-666-0627  
EMAIL: [info@dairylane.ca](mailto:info@dairylane.ca) | WEB: [www.dlsbarnsolutions.ca](http://www.dlsbarnsolutions.ca)